



# Yorkshire Church on Show *A GREAT Christian Presence At the GREAT Yorkshire show*

Issue 10 Autumn 2009



**Once again the Church on Show display proved a great success. If you were one of the 3670 who visited, perhaps you would echo some of the scores of positive comments made such as:**

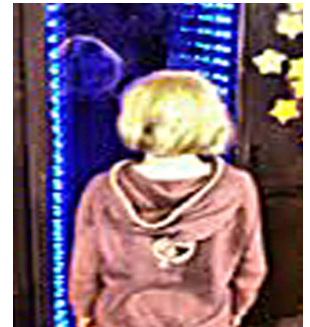
***“Church should have something for everyone of any age – this proves it can be done”***

***“Creative, inspiring, accessible and reaching out to all kinds of people”***

***“If this is church – I want to join!”***

**Almost 1,000 prayers were left in the prayer pool and 2700 named stars were left on the wall, proving the worth of offering interactive opportunities; visitors felt themselves to be a part of something bigger.**

**As preparation are made for next year’s display, we can be encouraged by a comment from one visitor: “If Jesus came to this show, how happy he would be in here”**



TRUST *Journey* BIRTH SPIRIT Creation RISK  
HOPE Pilgrimage Fire TOUCH Faith LOVE  
Belonging ETERNITY WIND Reflection JOY  
Commitment EARTH Water TASTE Challenge



## ***So, have you got an idea for 2010 yet?***

Having such a creative Design Team, ideas will always abound. The difficult part is choosing which one to develop and work on in the ten months leading up to the show.

Experience has shown us what appeals to the diverse range of visitors we seek to attract. Nonetheless, we make changes right up to the time of opening and often make a few tweaks once the public have put the display to the test.

We appreciate your prayerful support. Please pray that God continues to use the display and all our preparations to effectively show his love and touch the hearts & minds of those who share in it.

As for 2010... the only commitment I'd risk making at this stage – *there will be flowers!*

Nic Sheppard

TOUCH Faith LOVE HOPE Pilgrimage Fire  
WIND Reflection JOY Commitment EARTH  
SPIRIT Creation RISK Belonging ETERNITY  
Water TASTE Challenge TRUST *Journey* BIRTH

# 2010 Dates

Tues 13th July

Wed 14th July

Thur 15th July

*Further details can be  
found on the official  
Great Yorkshire Show  
Website*

[www.greatyorkshireshow.com](http://www.greatyorkshireshow.com)

**Don't forget to keep a  
watch on our own site**

[www.yorkshirechurchonshow.org.uk](http://www.yorkshirechurchonshow.org.uk)

### **Contact details**

Chair: Revd Maureen Browell: [maureenbrowell@talktalk.net](mailto:maureenbrowell@talktalk.net) (01484 545085)

Treasurer: Mark Gosling: [mark@gosling.entadsl.com](mailto:mark@gosling.entadsl.com)

Secretary: Edward Smith: [edwards@stlcloze.freemove.co.uk](mailto:edwards@stlcloze.freemove.co.uk) (01423 886529)

Communications: Revd John Davis: [office@scadim.org.uk](mailto:office@scadim.org.uk) (01757 241050)

Chief Steward: Mrs Margaret Davis: [margaret@davisthegables.fsnet.co.uk](mailto:margaret@davisthegables.fsnet.co.uk) (01423 770172)

**Yorkshire Church on Show** is supported by the Anglican Dioceses of Bradford, Ripon and Leeds, Sheffield, Wakefield and York, along with the Yorkshire Baptist Association, Quaker Outreach in Yorkshire, the Roman Catholic Diocese of Leeds, the Salvation Army and the Methodist Districts of Darlington, Leeds, West Yorkshire and York and Hull.