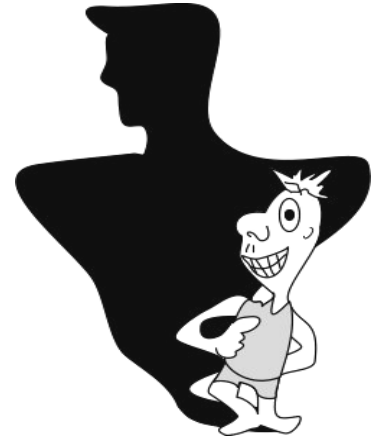


# “WHO DO YOU THINK YOU ARE?”

## 2009 CHURCH ON SHOW DISPLAY THEME

Once again, the Design Team have planned an interactive journey designed to enable personal reflection and gentle challenge. This year focus will be given to our relationship with ourselves, with others, and our relationship with God.



### THREE STAGES ON THE JOURNEY:

#### 1. Who do YOU think you are? –

How we see ourselves -

*Beautiful, Big, Cool, Fat, Friendly, Funny, Hard-working, Healthy, Imaginative, Loving, Old, Rational, Small, Smart, Shy, Stable, Tall, Thoughtful, Toney, Trusting, Ugly, Witty, Young.*

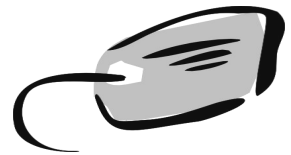
*Am I what I eat, what I wear, what I own, what I do, where I'm seen?*

#### 2. Who do OTHERS think you are? –

How others see us -

*Aunt, Bossy, Brother, Careless, Caring, Dad, Daughter, Employee, Energetic, Farmer, Fireman, Fun, Grandparent, Housewife, Loving, Manager, Mother, Musician, Neighbour, Reliable, Selfish, Serving, Sister, Son, Student, Team-Member, Timid, Uncle, Villager.*

*Am I what others make me, how others treat me, how I treat others?*



#### 3. GOD only knows who we really are –

How God sees us and loves us -

*Psalms 139: Lord, you have examined me and you know me. You know everything I do; from far away you understand all my thoughts. You see me, whether I am working or resting; you know all my actions. Even before I speak, you already know what I will say. You are all around me on every side; you protect me with your power.*

*Am I altogether known by God and loved by God?*



### Some Visual Aids We Plan To Use:

- Mirrors presenting distorted reflections
- Prayer Pool – focusing on praying for others
- Sand Box & Scarecrow
- Body Ingredients
- Family/Relationship Tree
- Mobiles & Glittery Things
- Named Stars